



You can.

Study abroad in Canterbury
with the British Studies Semester
Programme at Canterbury
Christ Church University.

2021





DIRECTOR'S WELCOME

I just wanted to take this opportunity to introduce you to the Study Abroad programme at Canterbury Christ Church University. You are about to embark on an exciting and rewarding period of your lives. I truly hope you enjoy your time spent with us.

Our programme offers you a number of opportunities to really get out there and engage with British history, society and culture. We run an entire course - 'Sites and Sights: Exploring British History and Culture' - that allows you to do just that. You will visit important historical and cultural sites, from Stonehenge to the Globe Theatre.

Closer to home, you will be studying within walking distance of Canterbury Cathedral, St Augustine's Abbey and St Martin's Church, all UNESCO World Heritage Sites intrinsically connected to the introduction of Christianity to Anglo-Saxon England.

While heritage is all around us in Canterbury, we also examine contemporary society. You will get the opportunity to study alongside American Studies students, examining cultural differences and similarities between the United States and Britain.

As well as these bespoke modules, you will also be able to choose to study courses from a wide range of disciplines across the University. Your study will therefore be tailored to your intellectual needs and interests.

Study abroad students enhance our classes in so many ways, and we hope you will forge friendships that will endure long after your stay with us.

Your academic studies at Christ Church will be flexible, and designed to suit you personally. This means that beyond the university there will be plenty of time for you to explore further afield. You could

travel to other European countries at weekends, or use your time to explore the UK further. Canterbury is less than an hour from London by train, providing you with easy connections to the rest of the UK and Europe.

Please do take the time to read on and consider studying here with us for a semester or more. You could be embarking upon an experience that becomes part of your own history and your future.

Dr David Budgen, Programme Director
for the British Studies Semester Programme



EXCHANGE AND MOBILITY TEAM WELCOME

Studying abroad is a big and important step for any student to undertake, and we are delighted that you are considering studying at Canterbury Christ Church University.

Whether you are here for a semester or a year, we will support you throughout your stay and will help you make the most of your time with us. From application to enrolment, we are your first point of contact for all things study abroad related – and if we don't know the answer we'll find out for you!

We hope you find all you need to know about the University in this brochure and that you choose Christ Church to host your study abroad experience.

We hope to see you soon!

Mr Kieran Thomsett
International Business Manager,
International Partnerships and Development Office



OUR CANTERBURY CAMPUS

THE CAMPUS

Built in the grounds of the ancient St Augustine's Abbey, we're proud to be part of a World Heritage Site and although we're in a busy city with a rich programme of festivals and culture, the sea, fields and woodlands of 'The Garden of England' are on our doorstep.

We offer great facilities at our Canterbury Campus. Students can step out into an exciting and world-famous cathedral city

and benefit from a campus with excellent learning and teaching resources, music venues, a superb sports centre, a well-stocked bookshop and plenty of coffee bars and places to eat.

We are transforming our city campus investing £150m in new and extended spaces for learning, teaching and research. This exciting development in the city started with the creation of a stunning Arts facility. This has been

followed by a new facility for Science, Engineering, Technology, Health and Medicine, and the conversion of the former Canterbury Prison site next to our campus.

This impressive building is home to our new and dynamic range of industry-relevant engineering courses. These courses, and new spaces for research and innovation, focus on creativity in engineering, designing real-world

ABOUT US

AROUND
1,200
STUDENTS FROM
ALL OVER THE WORLD

OVER 90
CLUBS AND SOCIETIES
RUN BY CHRIST CHURCH
STUDENTS' UNION

15,000 STUDENTS
1,600 STAFF

TOP 20 IN UK FOR
QUALIFIED
TEACHING
STAFF*

OVER 60,000
ALUMNI WORLDWIDE

TEF Silver Teaching
Excellence
Framework

* 79% of our academic staff hold a teaching qualification in addition to their academic and professional qualifications (HESA 2018)

solutions and opening up excellent career opportunities for our students and graduates.

The new Kent and Medway Medical School (KMMS), a collaboration between Canterbury Christ Church and the University of Kent, provides first-class medical education. The new specialist facilities, bringing together engineering, medicine and health, will be an important base for KMMS student doctors studying at both universities.

CREATIVITY ON CAMPUS

Our new creative arts building on the Canterbury Campus is dedicated to 21st century creativity and digital innovation on a site with a cultural heritage stretching back to the time of St Augustine. With dedicated facilities for music, performance, games design, media, photography and graphic design, we aim to inspire and support future generations of creative professionals and entrepreneurs.

The Daphne Oram building is designed to reflect contemporary working practices in the digital age, to showcase the work and talents of students and staff, and to facilitate diverse connections for them with partners and businesses. It is a hub for arts and culture in the city and further enhances our contribution to the fast-growing creative industries in the local and national economy.



Studying abroad in Canterbury was a perfect fit for me because it gave me exactly the kind of environment I was looking for.

The community I was a part of was very warm and always made me feel welcome. Classes that I took, such as 'Sites and Sights', allowed me to fully immerse myself in British culture and grow a deep appreciation for every experience I had whilst abroad.

I was lucky enough to travel around the country and meet some incredible people along the way! I'm counting the days for when I can return!

Jacub Gawlik, Illinois State University



If you want to enjoy some music, you'll find it everywhere at Christ Church. From intimate gigs by student rock bands at The Lounge to world-class concerts by internationally famous classical musicians – whether you're a performer or want to join an audience, you'll be spoilt for choice.

There are also over 90 clubs and societies run by Christ Church Student's Union, so from Anime to Volleyball, you'll find something you're interested in.

Although you'll be living and working close to the heart of the city, you'll find just about everything you need on campus. From a well-stocked book shop and quiet study corners to lively coffee bars, cafes and a food court – wherever you go you'll find somewhere to work or catch up with your friends.



THE CITY

Canterbury was one of medieval Europe's great places of pilgrimage and learning. It has a distinctly cosmopolitan feel, as the area's accessibility and attractions make it an extremely popular destination for visitors from all around the world.

There are many historic buildings as well as a fantastic variety of shops,

restaurants, pubs and cafés that adorn the cobbled streets within the city walls. Many of these serve delicious local produce ranging from Romney Marsh lamb to Kent cherries. You'll also find entertainment in the form of cinemas, theatres and galleries that all combine to give you the chance to enjoy a great student lifestyle.

Canterbury is also only a few miles from the coast, so you can escape from the bustle of the city to relax on the beach on a warm day. Less than an hour from London by train, and only two hours from Paris, Canterbury is perfectly situated with Britain and Europe at your fingertips.

Being in such a beautiful and historical city made me love the time I spent here.

Jara Anderson, Columbia College



I feel like I am in a game when I am in Canterbury - a peaceful game with limitless possibilities. The immediate freedom to be anywhere in the Eastern world is an expansion of the Canterbury lifestyle and has become a lifestyle with which I have undoubtedly fallen in love.

Avery Crosley, Slippy Rock University





PLACES TO VISIT IN CANTERBURY:

- Canterbury Cathedral
- St Augustine's Abbey
- Westgate Gardens
- Roman Museum
- Canterbury Castle
- The Beaney House of Art and Knowledge
- Canterbury Heritage Museum
- Westgate Towers
- The Canterbury Tales.

TOP TIPS:

Enjoy a show at the Marlow Theatre, a lantern-lit trip on the River Stour, an insightful walking tour of the city or an independent film at the Curzon Cinema. Follow one of the many cycle or walking routes which can take you from the heart of the city centre into the countryside, including the famous Great Stour Way and Crab and Winkle cycle path.

Studying in Canterbury is one of the best choices that I have ever made! I love the history associated with the city and how I can always find something new and interesting to do along the high street. Everyone that I met was very friendly and welcoming, especially the professors at Christ Church who took a personal interest in helping me in any way they could with my studies. Most importantly, I made so many great memories with life-long friends, and I have the British Studies Programme and Christ Church to thank for that!

Joshua Leonard, College of Lake County





A GUIDE TO THE AREA

Whether you study at our Canterbury, Medway or Tunbridge Wells campus you'll be able to enjoy all that the county of Kent has to offer.

Kent is situated in the South East of England. Known as 'The Garden of England', you'll find spectacular landscapes, dramatic coastlines, pretty villages and bustling towns. London is within easy reach by train and there are great transport links to the rest of the UK and Europe.

STUNNING BEACHES

There are over 50 beaches in Kent from the pebbly shores of Whitstable to the soft sands of Viking Bay in Broadstairs.

FASCINATING HISTORY

You'll be amazed at the amount of castles, fortresses and stately homes there are, including Hever Castle – the childhood home of Henry VIII's second wife, Anne Boleyn.

PICTURESQUE COUNTRYSIDE

Wherever you are based, you'll be able to explore Kent's green rolling hills, wooded valleys and outstanding scenery.

WONDERFUL SHOPPING

There's every type of shopping experience on offer. The county is full of independent shops and boutiques and offers high street stores and malls, such as Bluewater and Ashford Designer Outlet.

EXCITING FESTIVALS

There are a wide variety of festivals from animation to food and drink throughout the county, including Canterbury Festival and the Whitstable Oyster Festival.

OUTSTANDING SPORT

As well as offering a wide range of sporting events and activities the area is host to first class cricket as Canterbury is home to the Kent County Cricket Club.







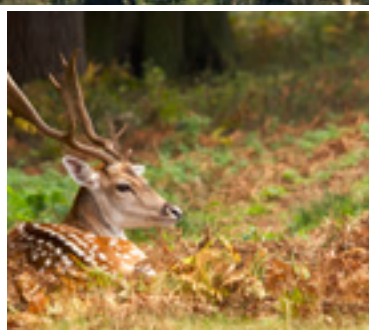
A GUIDE TO THE AREA

TOWNS TO VISIT

(with travel time estimate by train from Canterbury):

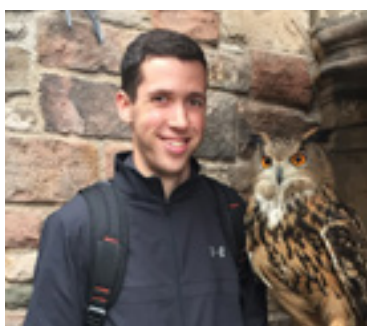
Faversham	a quaint market town which hosts many events (11 minutes)
Dover	home to the Dover Calais Ferry, Castle and White Cliffs (20 minutes)
Ramsgate	a seaside town with a beautiful marina at its centre (18 minutes)
Broadstairs	a coastal town with seven bays of golden sand (24 minutes)
Whitstable	famous for its oysters and seafood (29 minutes)
Margate	home to the Shell Grotto, Tate Gallery and Dreamland (30 minutes)
Herne Bay	a seaside town with Victorian bandstand and arcades (34 minutes)
Deal	home to Deal Castle, Walmer Castle and bustling high street (39 minutes)
Rochester	famous for Rochester Castle and Rochester Cathedral (40 minutes)
Folkestone	a port town with major harbour and Creative Quarter (41 minutes)
Maidstone	Kent's county town, home to Leeds Castle and Go Ape (48 minutes)
Sevenoaks	a commuter town, home to Knole House (1 hour 5 minutes)
Tunbridge Wells	a large spa town with famous gardens (1 hour 12 minutes)





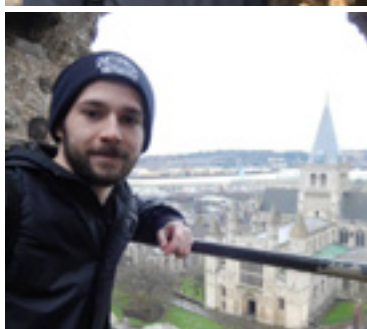
DISCOVER THE AREA

visitkent.co.uk | canterbury.co.uk | explorekent.org



The city of Canterbury is in a fantastic location! London, the White Cliffs of Dover, and France are all a short journey away, and I was really surprised how close I was to so many interesting places. The main Christ Church campus is just outside the walls of the historic city of Canterbury, which is a great backdrop. I loved the city itself; the cobbled streets, old buildings, and of course the cathedral, all made it feel like I had entered a time machine!

Joshua Leonard, College of Lake County



Left: **Bradley Hobson**, St Charles Community College
The view from Rochester Castle of the historic Rochester Cathedral



ACCOMMODATION

We know that you might be coming to the UK for the first time, so you'll want to be safe, comfortable, and have access to all the facilities you'll need. You'll also want to be able to meet new people and make friends. Whether you choose to stay in university accommodation or with a family through Homestay, you'll be within walking distance of the town and campus.

UNIVERSITY ACCOMMODATION

There's a fantastic mixture of accommodation to choose from, and because Canterbury is a small city it's all within walking distance of the main campus, library (Augustine House) and our Sports Centre.

As a student in university accommodation you'll enjoy:

- 24-hour security access
- high-speed wifi
- utility bills included in the rent
- **free** contents insurance

HOMESTAY

Living with a family in Homestay accommodation is very popular for those international students who would like to immerse themselves in local culture and learn more about British family life. Families are regularly visited by Accommodation staff to ensure they meet the requirements set by the University and British Council regulations.

360°

Watch 360° tours of the rooms
at: [www.canterbury.ac.uk/
study-here/accommodation](http://www.canterbury.ac.uk/study-here/accommodation)





WHAT WILL YOU STUDY?

During your time at Canterbury Christ Church University you can take the equivalent of between 12 and 18 credit hours, at Levels 200–400.

As part of the British Studies programme, there are two-tailor made courses:

- Sites and Sights: Exploring Britain's History and Culture

And specifically for our North American students:

- Divided by a Common Language: Culture, and Society in Britain and the USA

Both of the British Studies programme courses are at 200 Level. They are designed to complement each other, and allow you to gain an extensive and intensive critical knowledge and understanding of Britain.

Please check with your advisor before making any course options, as some partner institutions will require you to take one or two of the recommended courses.

In addition, there are a wide range of courses at Canterbury Christ Church University that will be open to you, so you can choose based on your major, the requirements of your home institution, or just something that sounds interesting! (Some courses will have prerequisites). For the current version of the course catalogue, please visit:

canterbury.ac.uk/studyabroad



A TYPICAL WEEK

Monday

Morning: Business lecture and seminar
Afternoon: Criminology workshop session

Tuesday

Morning: Study in the library (Augustine House)
Afternoon: *Divided by a Common Language* lecture

Wednesday

Morning: *Sites and Sights* lecture and seminar
Afternoon: Spin class at Christ Church Sport Centre

Thursday

Morning: *Divided by a Common Language* seminar
Afternoon: Christ Church Students' Union society meeting

Friday

All day: Day trip to Bruges
(*Sites and Sights* field trip)

At the weekend

Many students take advantage of the *Sites and Sights* field trips and use them as a springboard for a travel weekend. In previous years, students have stayed up in London for the weekend to enjoy a West End show and some fine dining, flown to Venice to appreciate the local culture, hopped on the Eurostar for a quick visit to Paris or simply enjoyed a long weekend taking in the city and its surrounding areas. The ideal location of Christ Church ensures that those who want to travel can do so easily.

HOW WILL YOU BE TAUGHT?

We know that students come from a range of academic backgrounds, including community colleges and 4-year institutions across North America, where they are taking a diverse range of majors.

The tailor-made courses on this programme assume no prior knowledge of British history or culture and are taught through a combination of lectures and seminars.

As part of the 'Sites and Sights' course, you will also be taken on regular field trips to key historical places in order to enable you to have a better grasp of the context of the history and culture covered in class.



OUR TAILOR-MADE COURSES

DIVIDED BY A COMMON LANGUAGE: CULTURE AND SOCIETY IN BRITAIN AND THE USA

The aims of this course are to give you the opportunity to gain insight into major aspects of political and social life in modern Britain and the USA and to encourage you to recognise and understand the similarities and differences in the social and cultural structures of Britain and the USA.

The course is structured thematically, covering major aspects of British and American society and culture. The course will be comparative, and topics will include patriotism and national identity, government structures, immigration, citizenship, identities, religion, regionalism, the 'Special Relationship,' Americanisation and globalisation, and popular culture. We will conclude with a discussion of the extent to which either nation is 'exceptional.'

SITES AND SIGHTS: EXPLORING BRITAIN'S HISTORY AND CULTURE

This course aims to enable you to engage with various aspects of British history and culture through a range of academically stimulating and enjoyable field trips to Canterbury, London, the South East of England and Europe.

The trips will feature both guided tours and the opportunity for independent learning so that your awareness of the important historical, social, and cultural life of Britain throughout the centuries is enhanced. The course will usually be made up of nine distinct field trips to locations around the South East, London, and Europe. Typically, the trips will take place on a Friday and you should expect one trip to continental Europe as part of the module. You will also have time in the classroom to reflect upon the field trips and prepare for assessments.



Studying at Christ Church was such an incredible experience. I had so many opportunities that I never would have got had I not participated in this exchange. My favourite part was the 'Sights and Sites' course where I met so many people from other places while exploring the best of what England had to offer.

We went to Stonehenge, London and many castles just to name a few trips, all while learning about the history and importance of these places. I met people from all over the world and these are friendships that I will keep for the rest of my life. I recommend doing an exchange to anyone who is open to broadening their horizons and changing their perspective!

Taylor Felix, Algoma University





Tower of London



Houses of Parliament, London



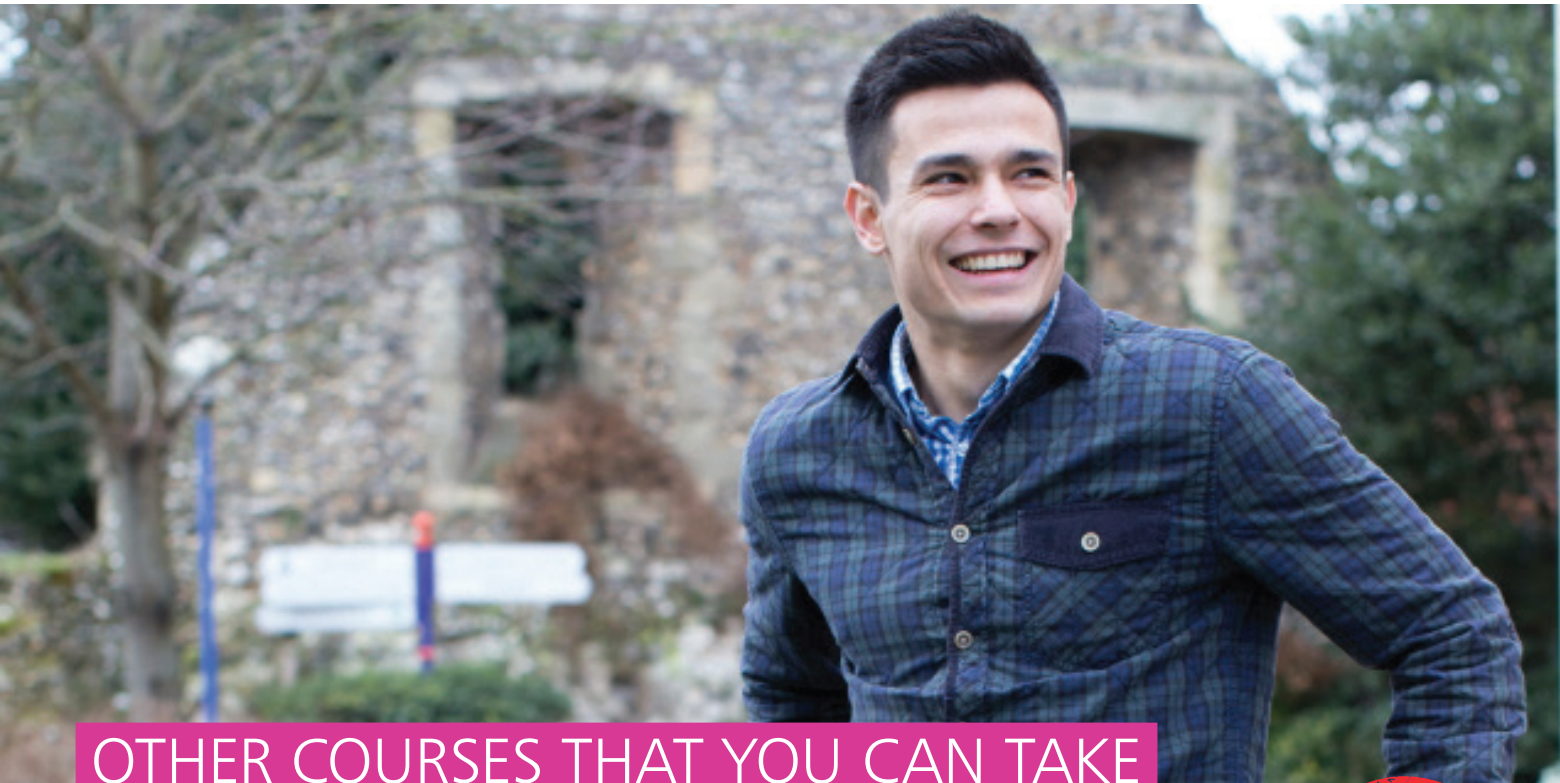
Bruges, Belgium



Shakespeare's Globe Theatre

A TYPICAL FIELD TRIP ITINERARY MIGHT INCLUDE:

- Rochester Castle and Fort Amherst
- Dover Castle
- Deal Castle
- Stonehenge and Bath
- The National Gallery
- Windsor Castle
- The Tower of London
- The Museum of London
- The Globe Theatre
- Bruges, Belgium



OTHER COURSES THAT YOU CAN TAKE

If the tailor-made courses aren't right for you, or you need to fulfill specific requirements for your major, you can choose all your options from across the Canterbury Christ Church University course catalogue.

The full list of current available courses is in our course catalogue which can be found on our website. The list below details some of the subject areas we offer, however these are subject to change and can vary each semester dependent on availability:



Accounting and Finance	Geography
American Studies	Graphic Design
Archaeology	Law
Business Studies	Media Studies and Communication
Computing	Music and Performing Arts
Contemporary Language Studies	Politics and International Relations
Creative and Professional Writing	Psychology
Dance Education	Science
Drama	Sociology
Engineering	Sport and Exercise Science
English	Theology, Religion, Philosophy and Ethics
Film, Radio and Television Studies	Tourism
Games Design	

I really enjoyed the modules and tutors and I liked the fact that everything is more in-depth as far as education goes.

Alex Burks, Arkansas State University



CREDIT TRANSFER

You will be awarded credit at your home institution based on the marks you achieve at Canterbury Christ Church University. You will be issued an official transcript of grades and a certificate upon successful completion of the programme.

Indicative credit equivalence

CHRIST CHURCH	USA / CANADA	ECTS
10 credits	3 credit hours	5 credits

Indicative level equivalence

CHRIST CHURCH	USA / CANADA	YEAR
Level 4	200	Year 1
Level 5	300	Year 2
Level 6	400	Year 3

Indicative grade conversion

CHRIST CHURCH DEGREE CLASS	CHRIST CHURCH PERCENTAGE	USA / CANADA
1st	75+	A+
1st	70-74	A
2.1	67-69	A/A-
2.1	64-66	B/B+
2.1	60-63	B
2.2	57-59	B/B-
2.2	54-56	C/C+
2.2	50-53	C
3rd	47-49	C/C-
3rd	44-46	D/D+
3rd	40-43	D
Fail	39-	F



ADVICE AND SUPPORT

When you start your student life at Christ Church, our specialist advisers can provide advice and support about anything that's worrying you outside of your studies.

International student advice

As an international student, you'll join a diverse community drawn from over 80 countries.

Our International Partnerships and Development Office is here to help you and you'll have access to all the advice you'll need to feel happy and settled in your new home.

Financial advice

Living on a student income can be a challenge. If you have any money worries, our Student Support and Wellbeing Advisers are available to help you.

Counselling, mental health and emotional wellbeing

Starting university brings new challenges and you may find that your new lifestyle means you need some extra emotional support. Should you need it, we offer a free, confidential counselling service and a mental wellbeing service. Our specialists include fully qualified professionals, including BACP registered counsellors and mental health professionals, with links to external support agencies.

Overcoming barriers to achievement

If you live with disability, a learning difficulty or long-term health issues, and potentially face barriers to achievement, our Student Disability Service is ready to support with:

- practical support and accessible teaching rooms
- special arrangements in examinations and assessment
- information about funding opportunities to secure support for your specific needs.



HOW TO APPLY

To be eligible to apply you must be enrolled as a full-time student at one of our partner institutions. A list of current partners is available on the Canterbury Christ Church University web pages, visit: canterbury.ac.uk/studyabroad



You will usually require a minimum Grade Point Average (GPA) of 2.75 or equivalent. The level of English required to be successfully admitted to the programme is a level equivalent to IELTS 6.0 (if English is not your first language). Please make sure you check GPA conditions and English language requirements with a Study Abroad Advisor at your home institution.

If you have a level of English lower than the standard requirement, you can attend our Pre-Sessional English Course for 10 weeks per 0.5 IELTS band. For more details about the courses, including fees, please visit:

canterbury.ac.uk/ug/general-english

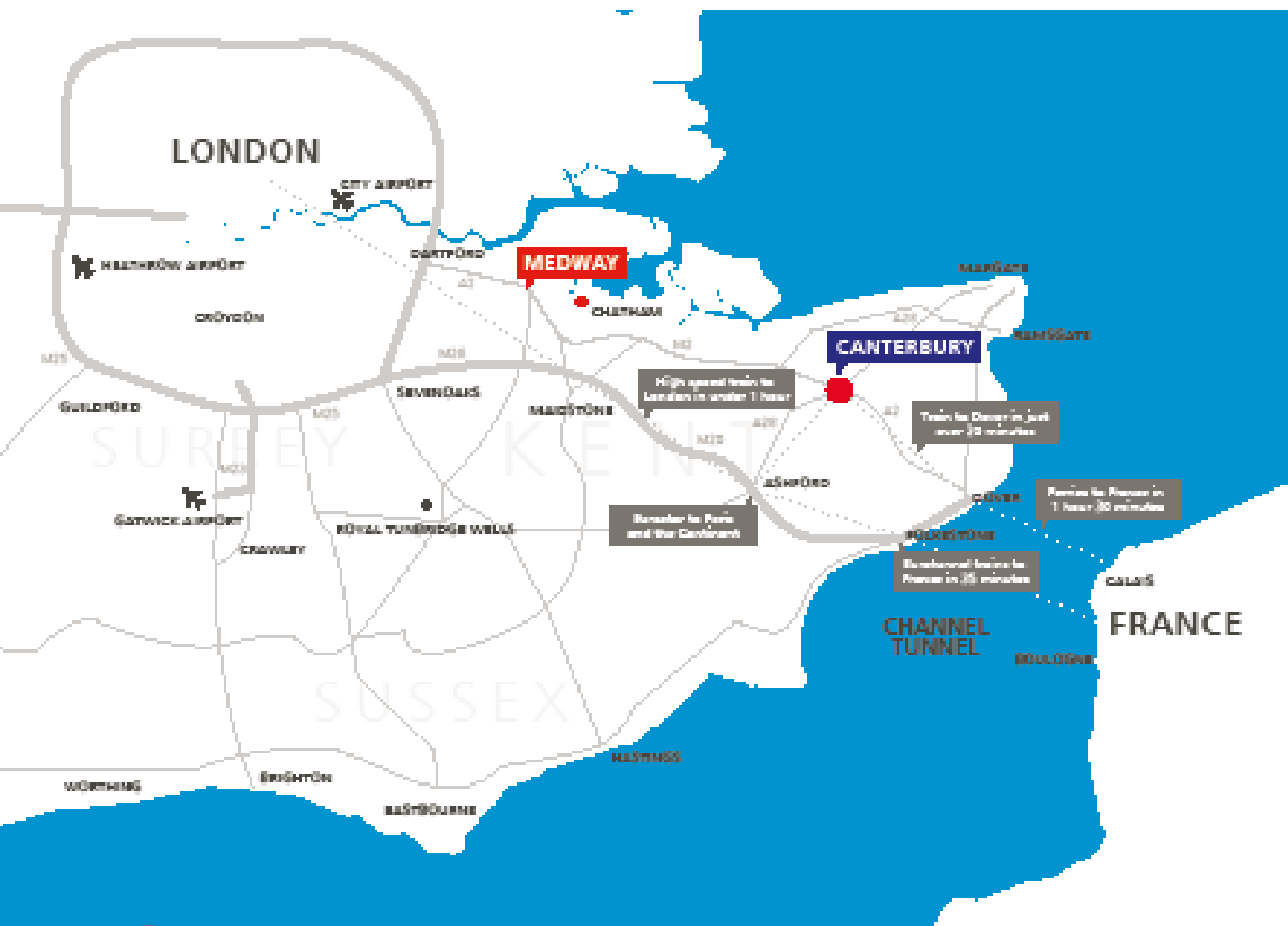
You have the option to study at Canterbury during the Fall (September – December) semester, Spring (January – April) semester, or both semesters, depending on your preference. To find out more about the application process and to gain an application form, please contact the Study Abroad Advisor at your home institution. You will need to provide a copy of your transcript and your passport.

APPLICATION DEADLINES

FALL & SPRING SEMESTER 20/21 (September 2020 – May 2021)	14 May 2021
SPRING SEMESTER 21/22 (January – May 2022)	15 October 2021

“While it took me a minute to get fully acquainted with making friends, once I did I was able to find the kindest people. The University was very accommodating, I felt I lived in the library (writing and reading of course). I’m definitely going to miss Canterbury and I wish I was there longer. I will be back to visit soon. Thanks Canterbury Christ Church University.”

Eric Martin, Texas State University



WHAT WILL BE YOUR STUDY ABROAD EXPERIENCE?

For more information please visit: canterbury.ac.uk/studyabroad

Or contact us by email: studyabroad@canterbury.ac.uk



Follow us on Instagram @mystudyabroad
Get involved using #mystudyabroad #cccu



Canterbury
Christ Church
University